

1

2

3

4

A

B

C

D

SBX2 – REVISIONS

1

SCH REV	PCB REV	DATE	BY	DESCRIPTION	SCH REV	DATE	BY	
0.0		00 June 20	wsk	Start of schematic capture based upon unreleased SBX1.				
1	1	00 July 25	wsk	Initial schematic capture complete.				
2	2	00 Aug 22	wsk	Sheet 3: Changed crystal oscillator load caps to 18pF; Added RP15; Sheet 4: Deleted LED1 & R2; Renamed LED2 to LED1; Changed LOCAL_LED(L) to DCE_DCD(L); Sheet 6: Added C20, P9, R13, R14, R15, RP16, RP17, U17; Changed P6 to 2mm header that supports the Systronix DTE / DCE / IrDA Dongle; Deleted R7 & R8; Connected U13 pin 24 to ground;				
3	3	01 Jul 03	wsk	Sheet 3: Disconnected UARTRD(L) & UARTWR(L) from U14; Routed RD(L) and WR(L) to sheet 6; Sheet 4: Added pullup RP14C to LCD_D7 to detect disconnected or unpowered LCD module; Sheet 6: Connected U6-21 & U6-25 to ground;	Renamed J2 to P10; Added P11;			

TABLE OF CONTENTS

SHEET	TITLE
1	REVISIONS
2	NOTES
3	SBX INTERFACE
4	LCD
5	DIGITAL I/O
6	SERIAL I/O

TO DO:

Silkscreen for standoff should be 6-32

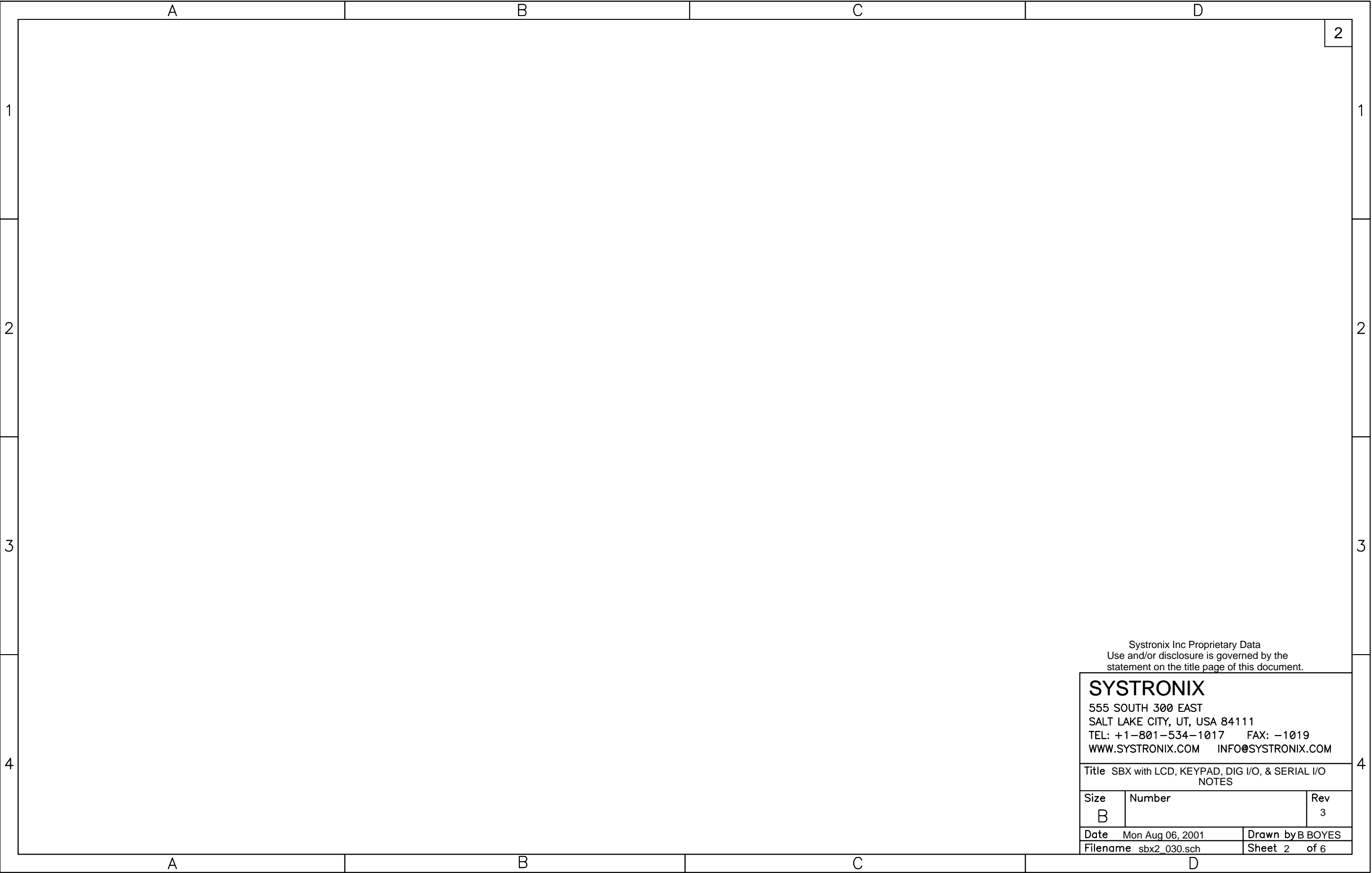
Systronix Inc Proprietary Information.
This document contains financial, business, scientific, technical, economic or engineering information subject to USC § 1831-1839, Protection of Trade Secrets. Disclosure to others, use, or copying, without the express written authorization of Systronix Inc is strictly prohibited. Violation may result in criminal prosecution under 18 USC § 1831-1839 or 18 USC 1905.
Copyright 1999, Systronix Inc.
Unpublished Work. All rights reserved.

SYSTRONIX

555 SOUTH 300 EAST
SALT LAKE CITY, UT, USA 84111
TEL: +1-801-534-1017 FAX: -1019
WWW.SYSTRONIX.COM INFO@SYSTRONIX.COM

Title SBX with LCD, KEYPAD, DIG I/O, & SERIAL I/O REVISIONS

Size	Number	Rev
B		3
Date Mon Aug 06, 2001		Drawn byBAB/wsk
Filename sbx2_030.sch		Sheet 1 of 6



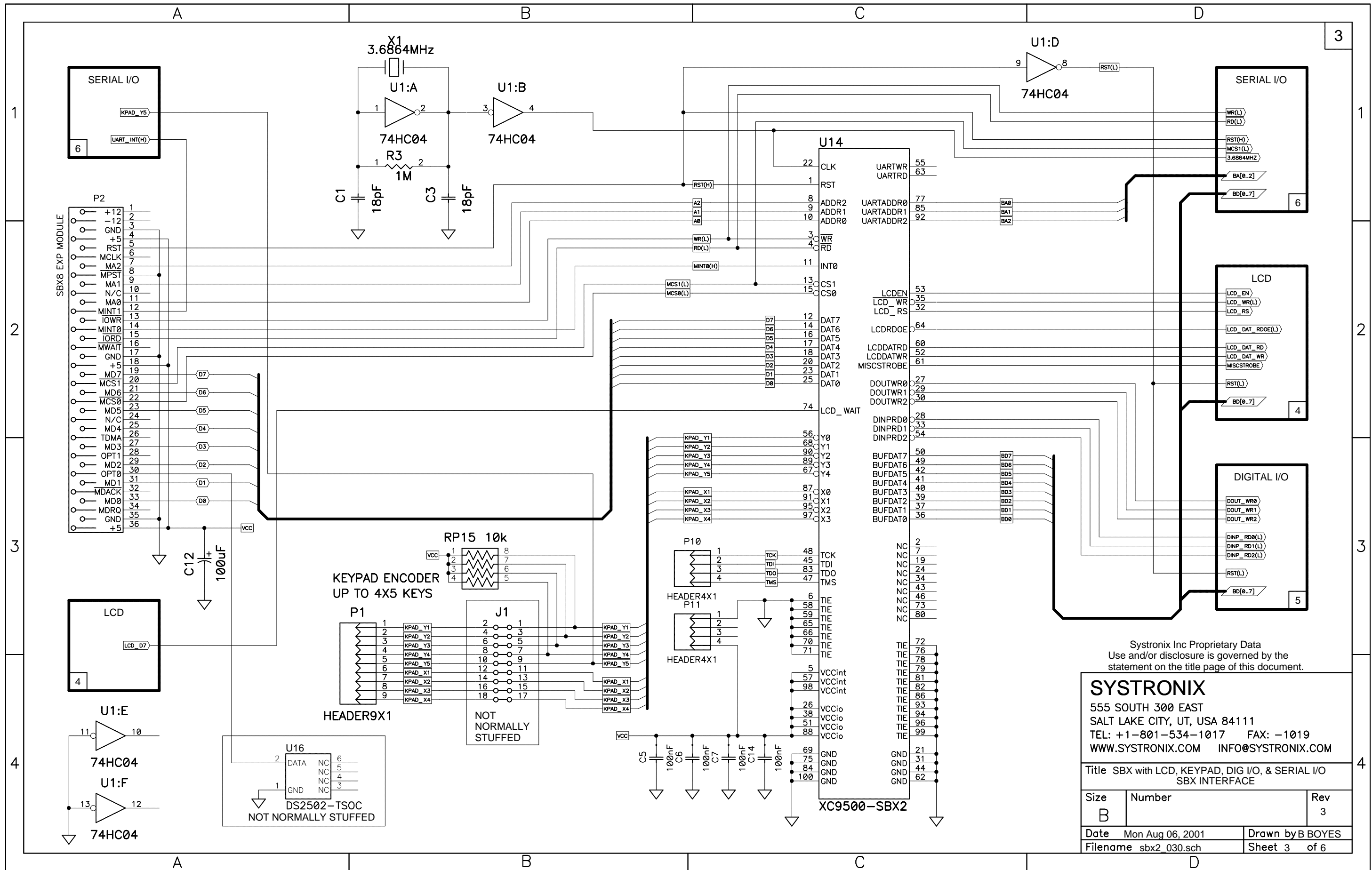
Systronix Inc Proprietary Data
Use and/or disclosure is governed by the
statement on the title page of this document.

SYSTRONIX
555 SOUTH 300 EAST
SALT LAKE CITY, UT, USA 84111
TEL: +1-801-534-1017 FAX: -1019
WWW.SYSTRONIX.COM INFO@SYSTRONIX.COM

Title SBX with LCD, KEYPAD, DIG I/O, & SERIAL I/O
NOTES

Size	Number	Rev
B		3

Date	Mon Aug 06, 2001	Drawn by	B BOYES
Filename	sbx2_030.sch	Sheet	2 of 6



Systonix Inc Proprietary Data
Use and/or disclosure is governed by the
statement on the title page of this document.

SYSTRONIX
555 SOUTH 300 EAST
SALT LAKE CITY, UT, USA 84111
TEL: +1-801-534-1017 FAX: -1019
WWW.SYSTRONIX.COM INFO@SYSTRONIX.COM

Title SBX with LCD, KEYPAD, DIG I/O, & SERIAL I/O SBX INTERFACE		
Size B	Number	Rev 3
Date Mon Aug 06, 2001	Drawn by B BOYES	
Filename sbx2_030.sch	Sheet 3 of 6	

